

配置参数:

1. 光学系统: 目镜 0.75X+干涉物镜 10X+100W 相机;
2. 视场尺寸: 653*653um;
3. 测试样品: 编号 1~6, 摩擦磨损金属表面;
4. 测试参数: 粗糙度、剖面轮廓;
5. 数据分析: 拼接测量、校平、提取剖面、参数分析

编号 1 样品

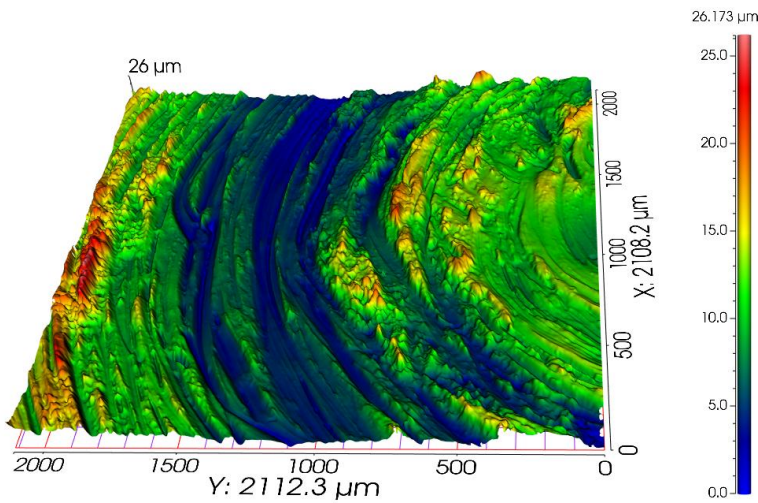


图 1.表面 3D 轮廓视图

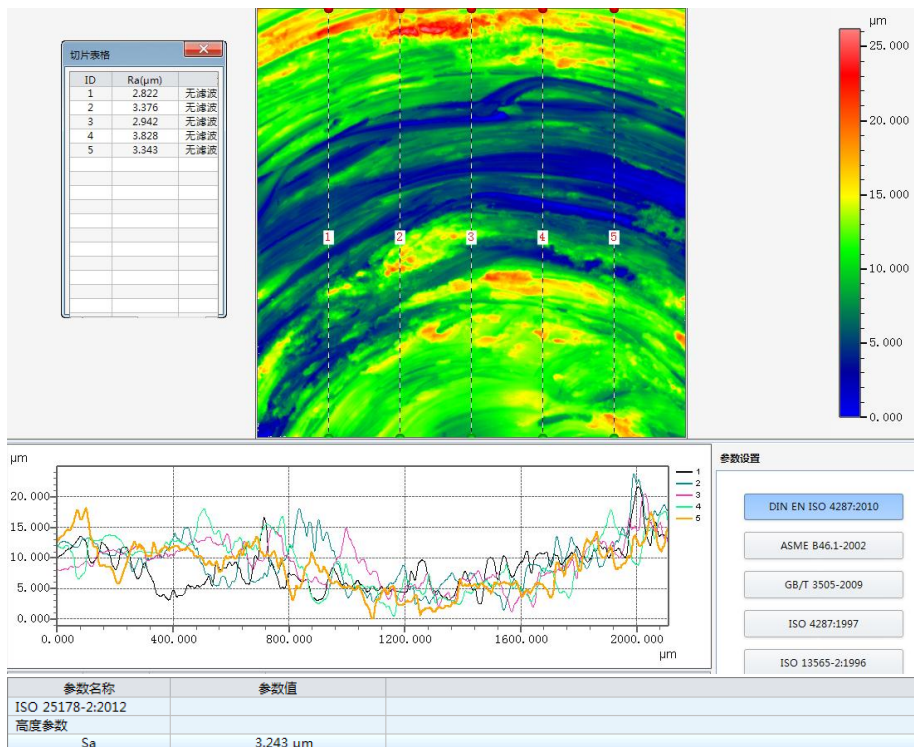


图 2.表面粗糙度 Ra&Sa、剖面轮廓曲线

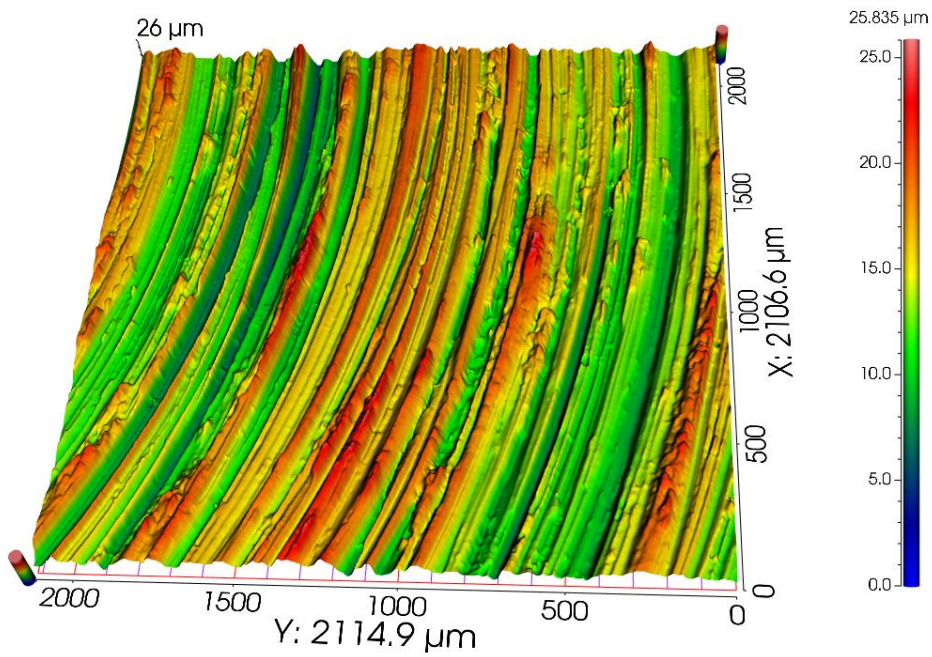


图 3.表面 3D 轮廓视图

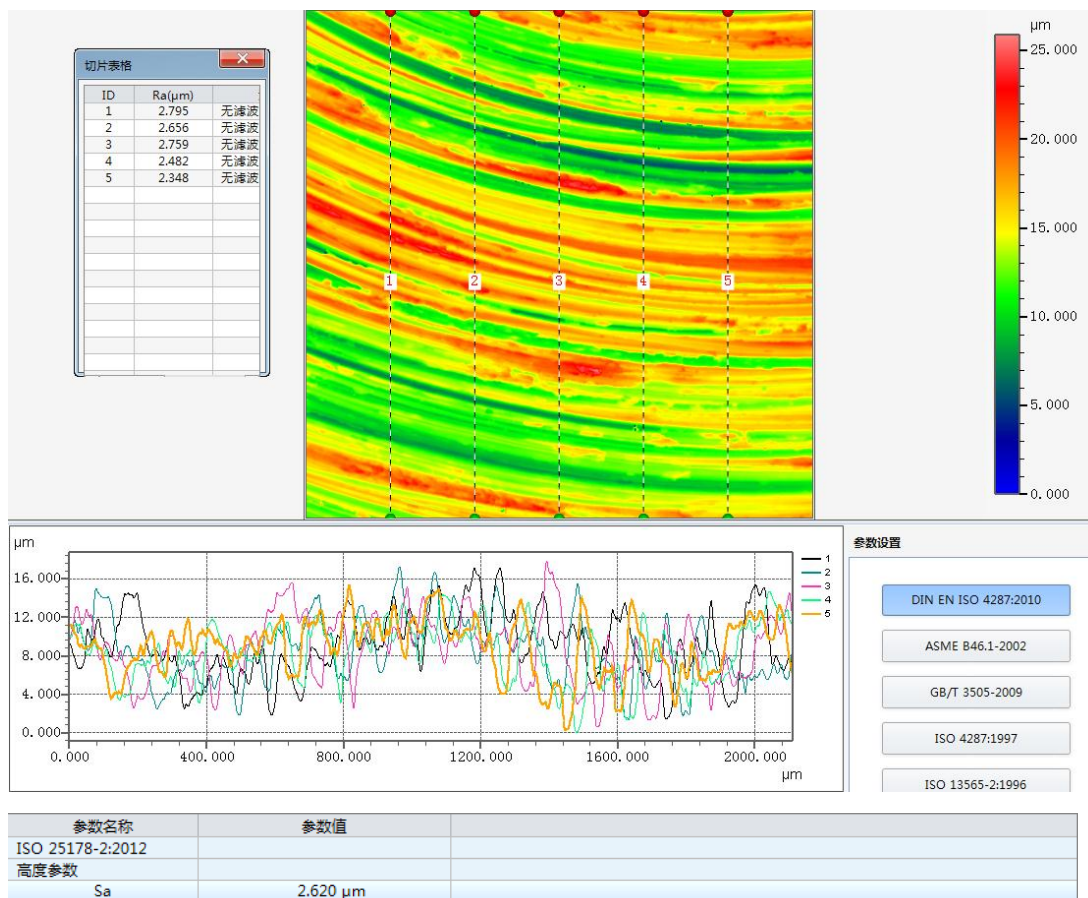


图 4.表面粗糙度 Ra&Sa、剖面轮廓曲线

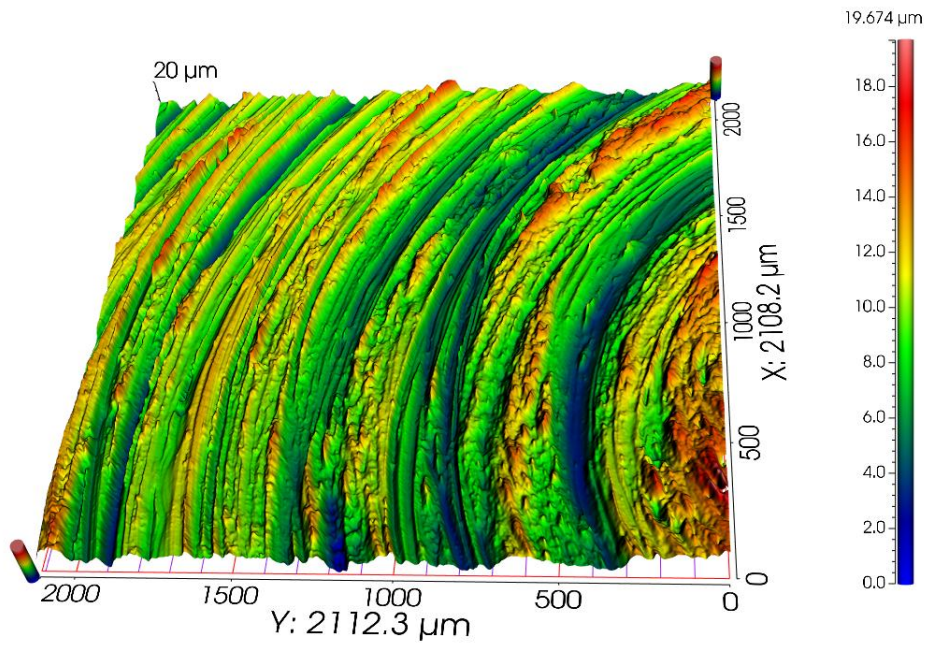


图 5.表面 3D 轮廓视图

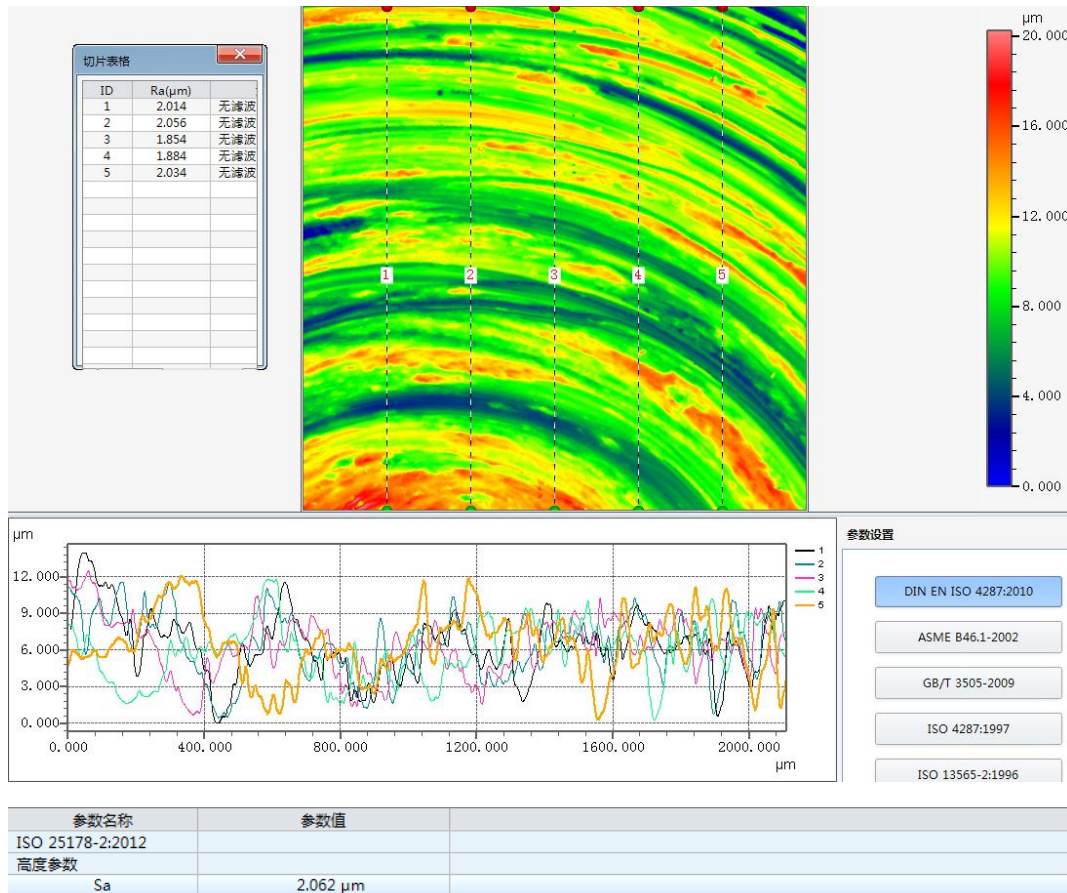


图 4.表面粗糙度 Ra&Sa、剖面轮廓曲线

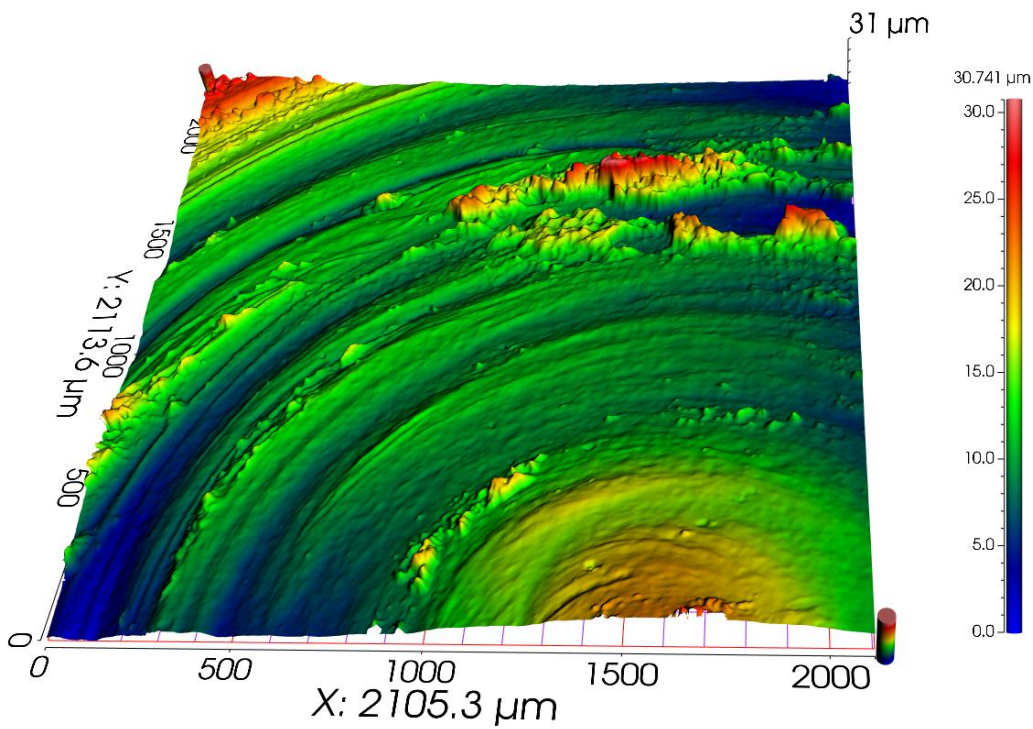


图 7.表面 3D 轮廓视图

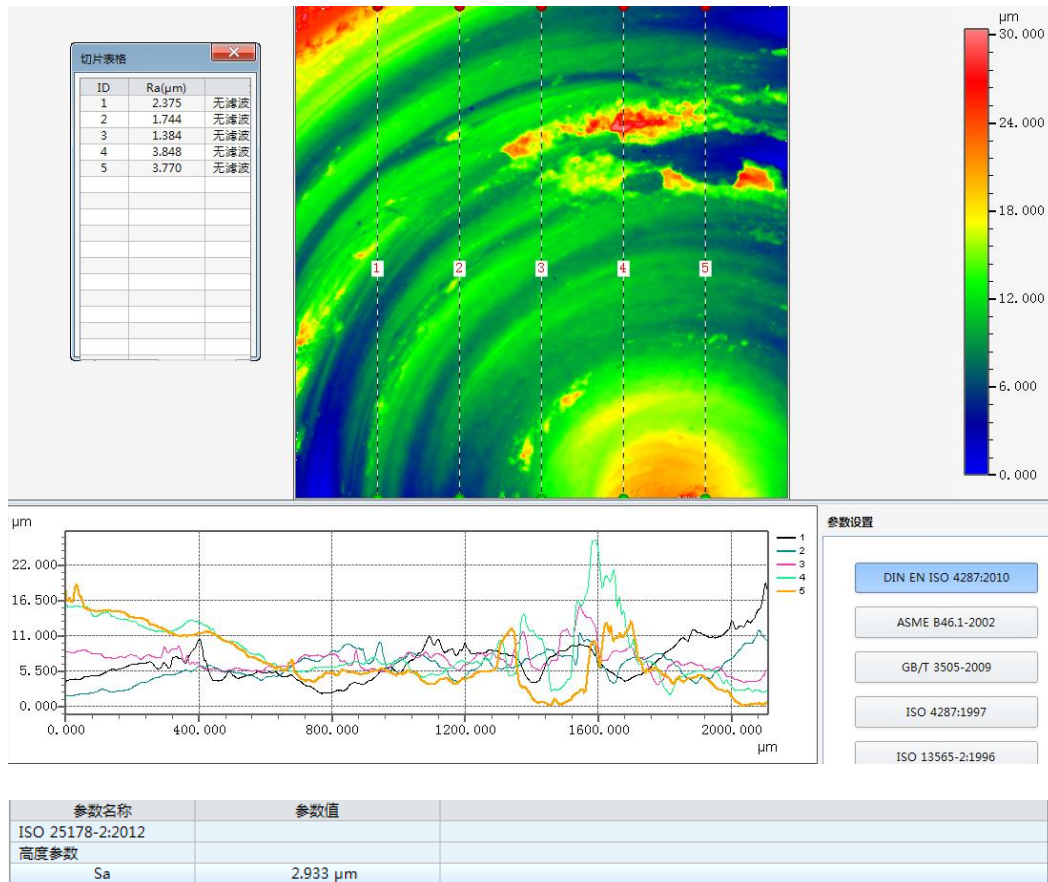


图 8.表面粗糙度 Ra&Sa、剖面轮廓曲线

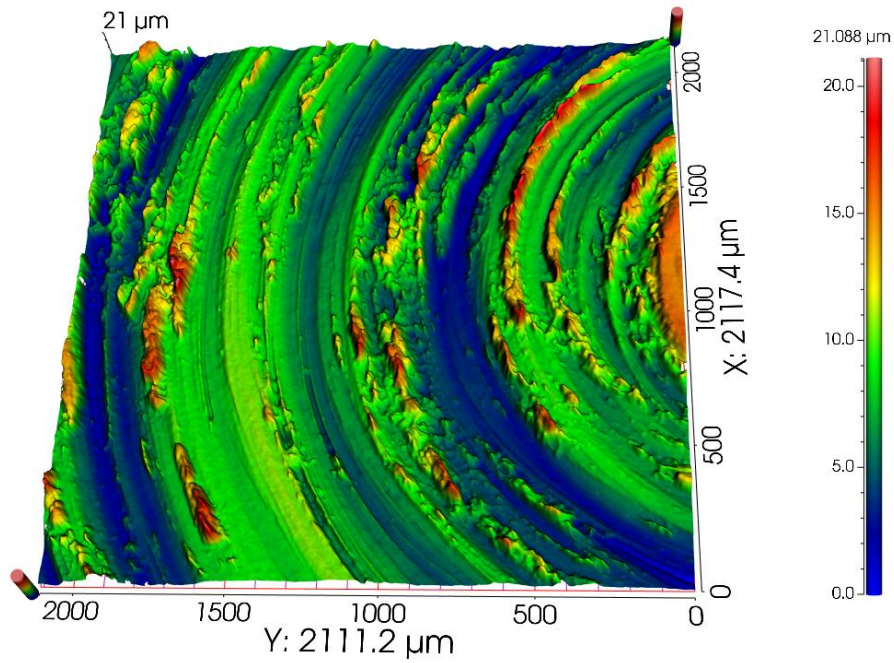


图 9.表面 3D 轮廓视图

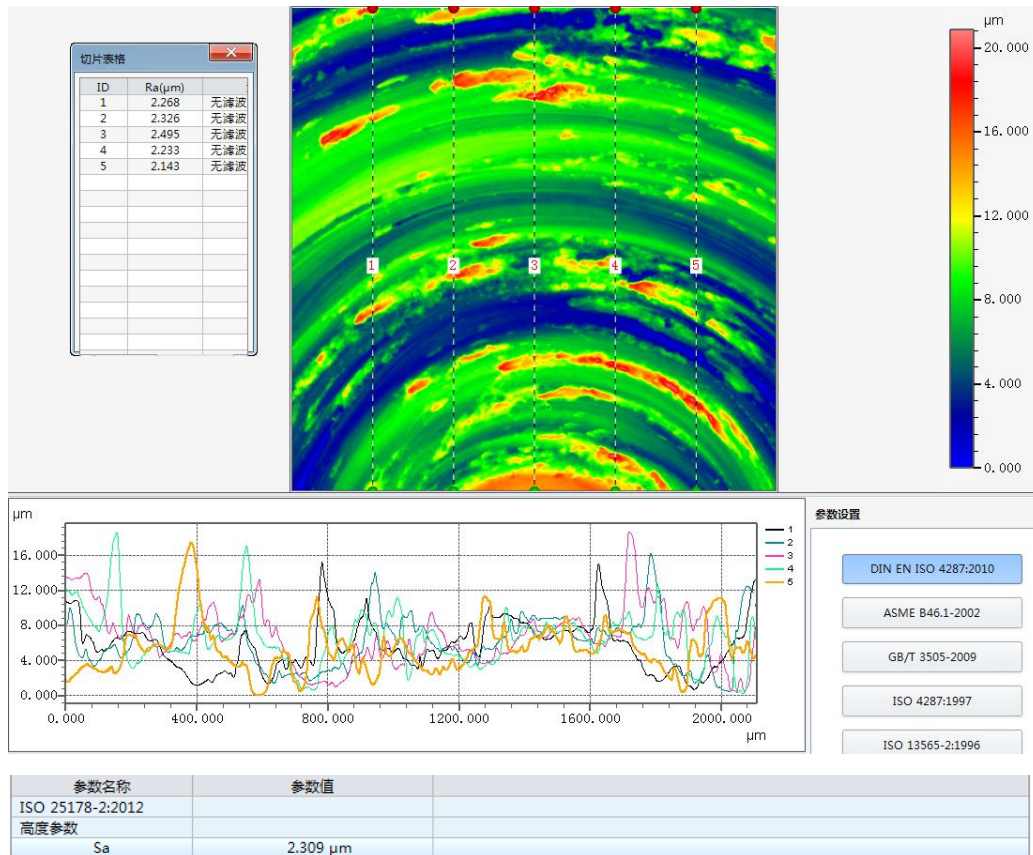


图 10.表面粗糙度 Ra&Sa、剖面轮廓曲线

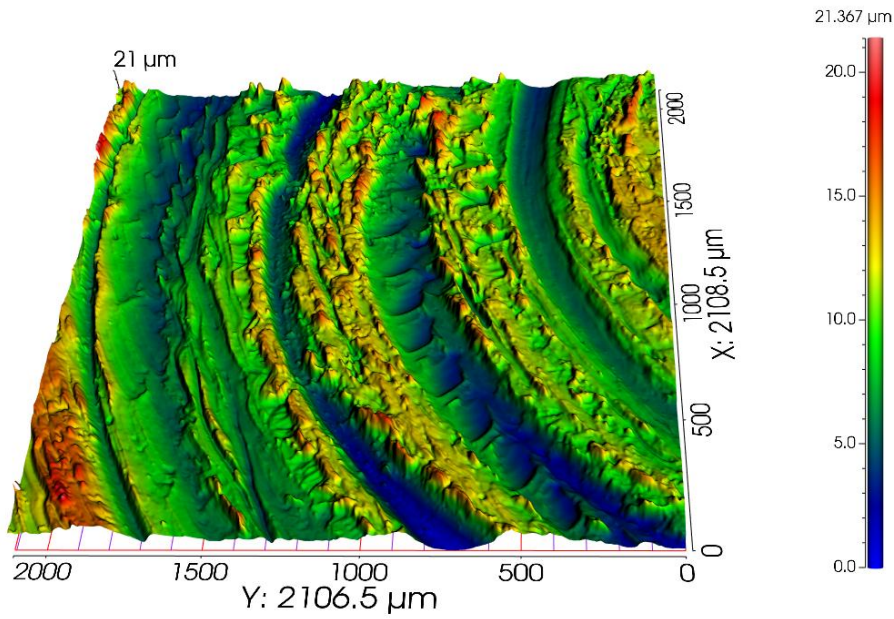


图 11.表面 3D 轮廓视图

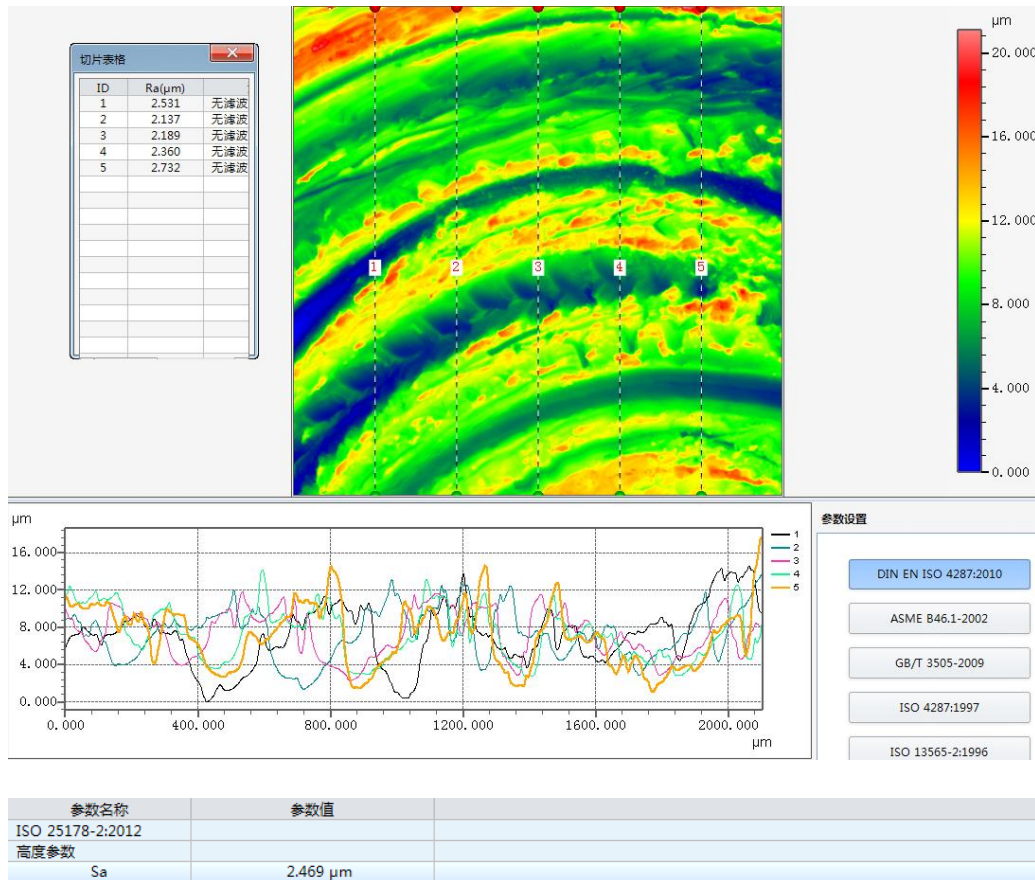


图 12.表面粗糙度 Ra&Sa、剖面轮廓曲线